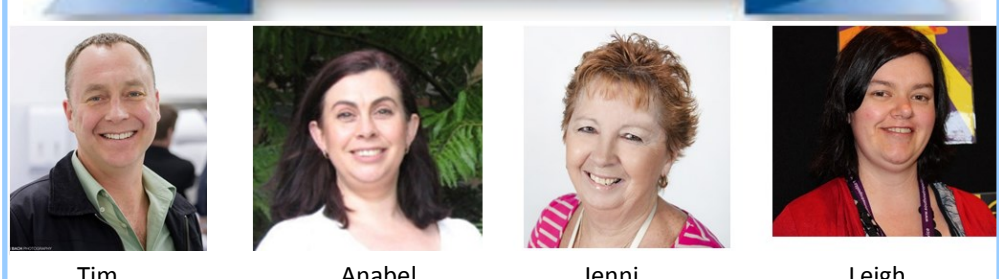


HONOURING OUR PAST TO SHAPE THE FUTURE OF THE ACMHN CONSULTATION-LIAISON SPECIAL INTEREST GROUP

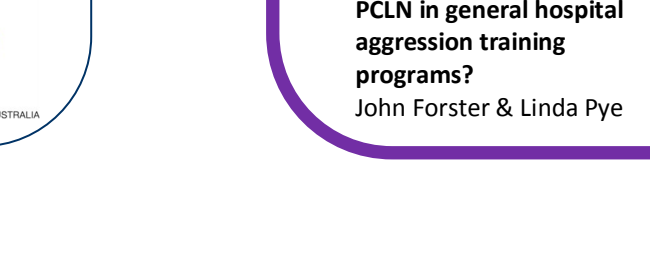
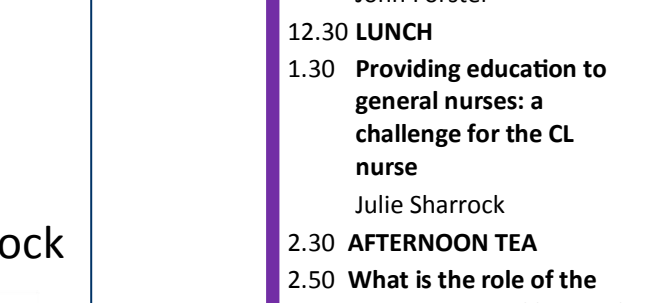
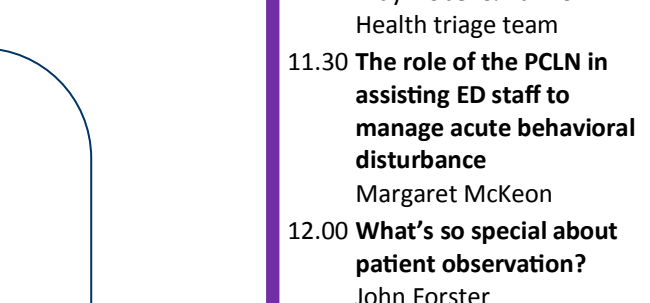
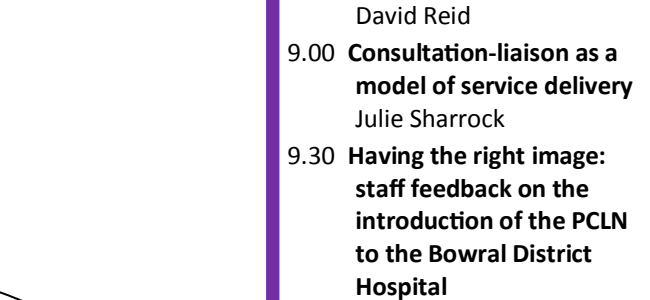
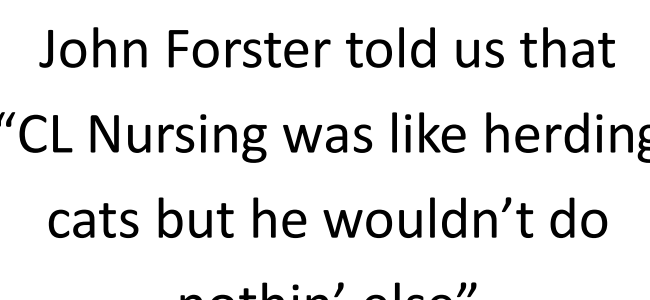
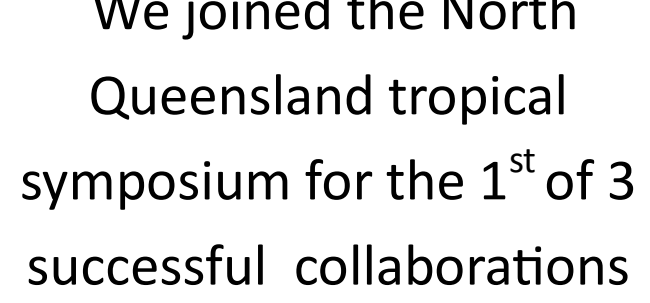
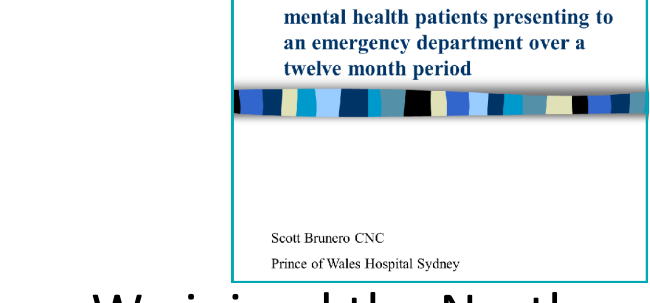
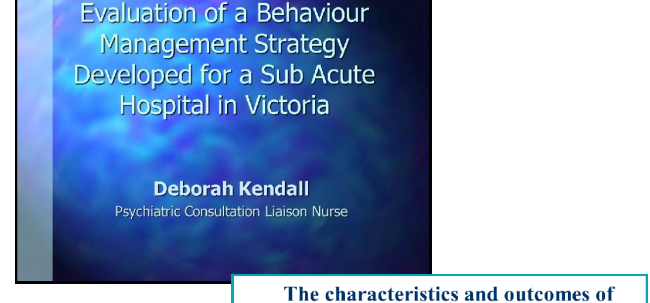
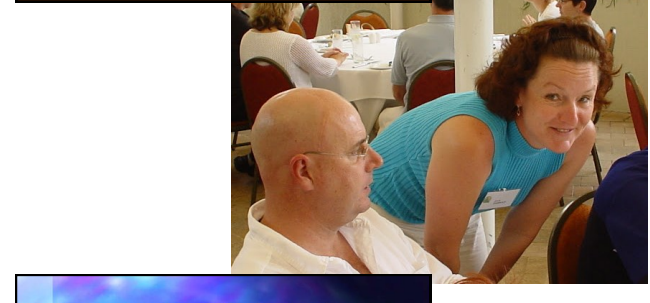
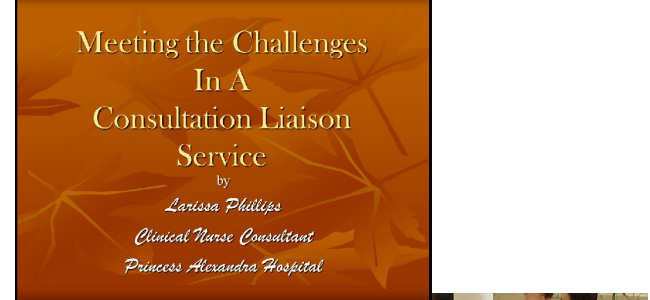
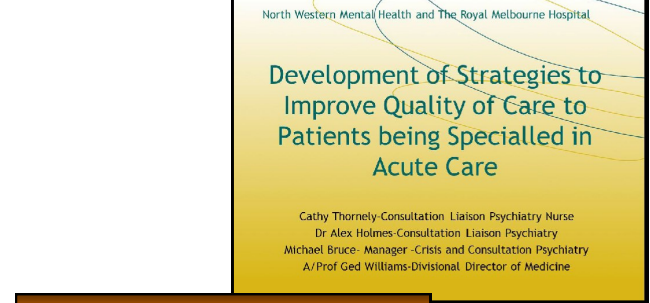
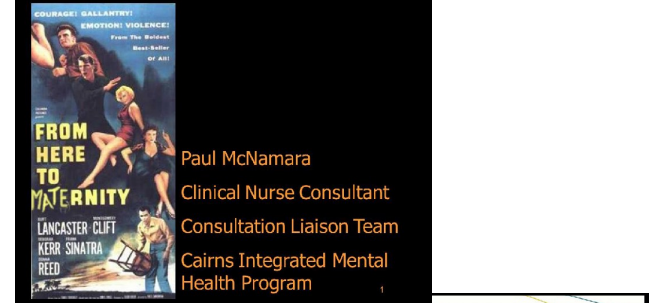
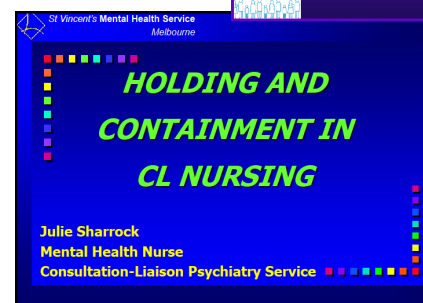
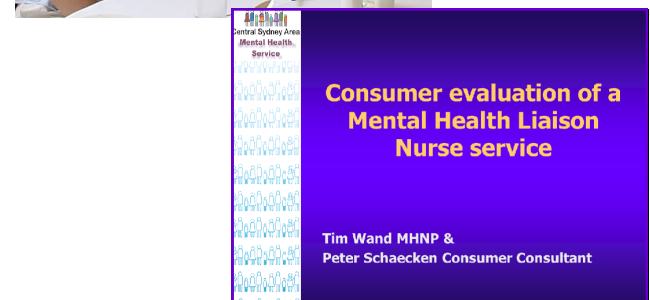
The primary purpose of the ACMHN CLSIG is to promote interest in and the development of CL nursing. The CLSIG provides members of The College who have a particular interest in CL with a forum for exchanging news, views and ideas. The CLSIG promotes research endeavours and other matters of interest in CL by organising an annual conference and via other means such as meetings or workshops that are considered timely and worthwhile. The CLSIG operates within the framework of The College constitution and by-laws.

HONOUR ROLL



- 2014** Chair: Tim Wand
Conference Coordinator: Jenni Bryant
Secretary: Anabel de la Riva
Education Officer: Leigh Peterson
- 2013** Chair: Tim Wand
Treasurer: Jenni Bryant
Secretary: Anabel de la Riva
Education Officer: Leigh Peterson
- 2012** Chair: Tim Wand
Treasurer: Jenni Bryant
Secretary: Anabel de la Riva
Education Officer: Chris Dawber
- 2011** Chair: Julie Sharrock
Treasurer: Jenni Bryant
Secretary: Anabel de la Riva
Education Officer: Tim Wand
- 2010** Chair: Julie Sharrock
Finance Manager: Bill Politis
Secretary: Ann McElroy
Education Officer: Jenni Bryant
- 2009** Chair: Julie Sharrock
Finance Manager: Carey Blaik
Secretary: Ann McElroy
Education Officer: Jenni Bryant
- 2008** Chair: Julie Sharrock
Finance Manager: Carey Blaik
Secretary: Ann McElroy
Education Officer: Jenni Bryant
- 2007** Chair: Cecily Pollard
Finance Manager: Julie Sharrock
Secretary: Ann McElroy
Education Officer: Jenni Bryant
- 2006** Chair: Cecily Pollard
Finance Manager: Julie Sharrock
Secretary: Paul McNamara
Education Officers: Jenni Bryant & Tim Wand
- 2005** Chair: Cecily Pollard
Accounts Manager: Tim Wand
Secretary: Paul McNamara
Conference Convenor: Julie Sharrock

TELLING STORIES



"I first came into contact with the e-list in 2008; I loved the comradeship of the forum, the willingness to share initiatives & innovations, & that intoxicating feeling of being understood even though physical support was thousands of km's away. My 1st CLSIG conference in 2009 proved to be a replenishing 2 days of clinical supervision that had me committing to all future CLSIG events. The depth of discussions & case presentations from fellow CL nurses has been awesome over the last 5 years that I have been involved"

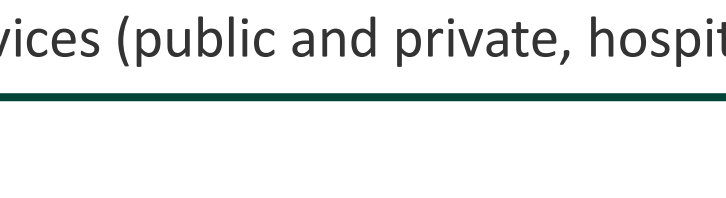
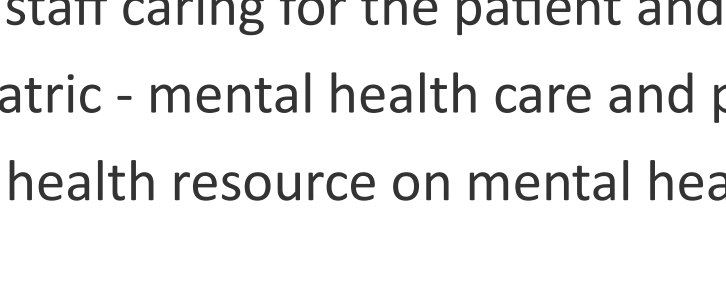
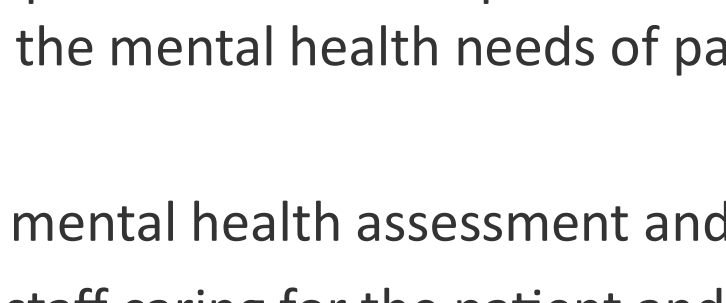
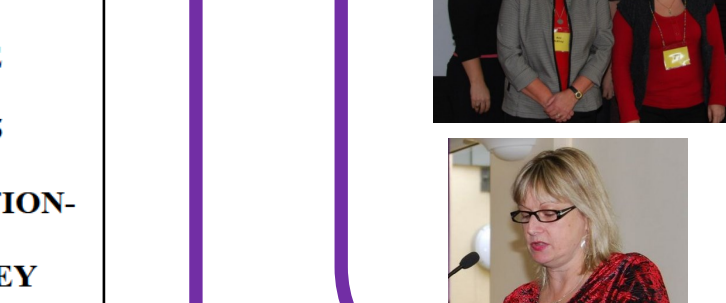
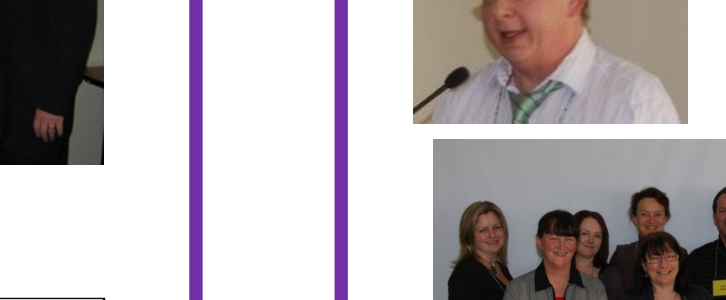
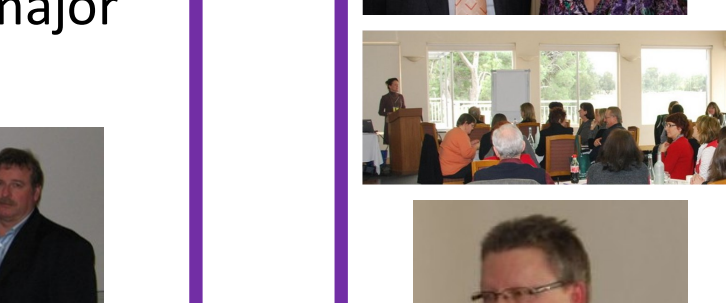
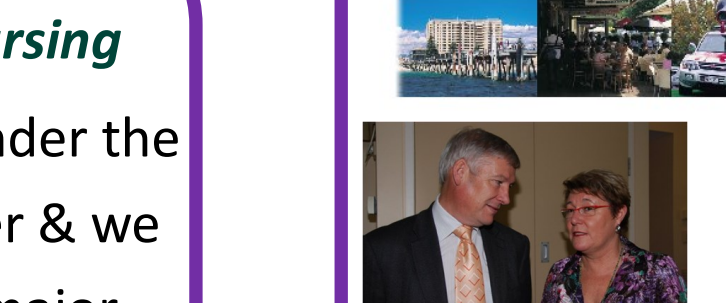
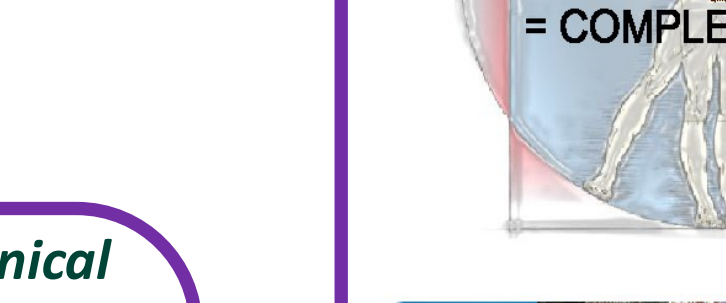
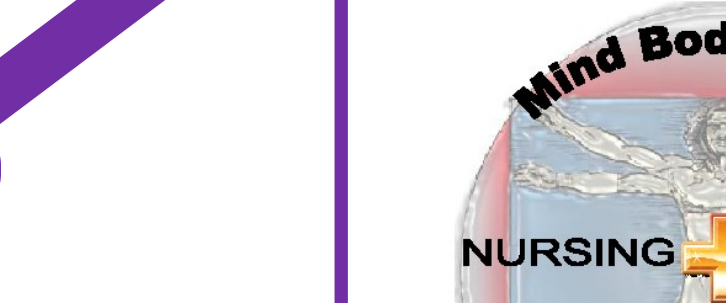
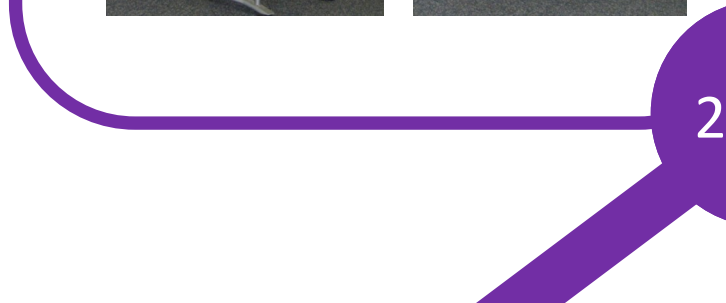
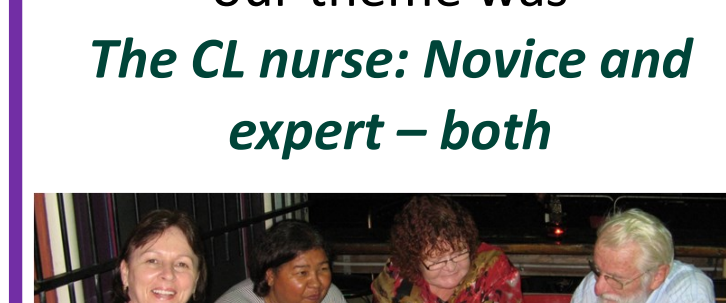
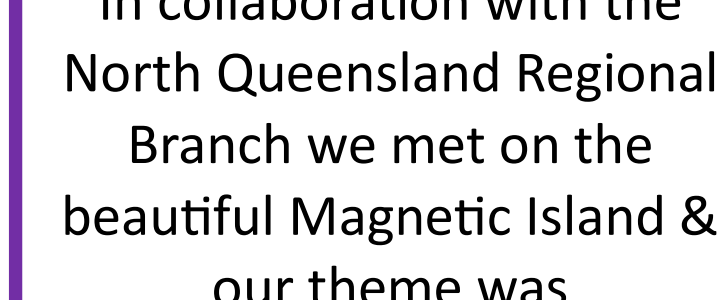
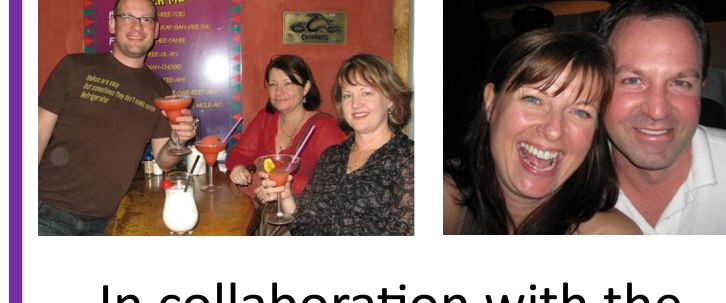
Leigh Peterson

"I found like minds who get what it is we do & left recharged, motivated & empowered."

Todd Bagshaw

"I met inspirational people who openly shared their thoughts, knowledge & experiences that resonated with me as a new comer to this area of clinical practice. I felt I had arrived somewhere very special."

Ann McElroy

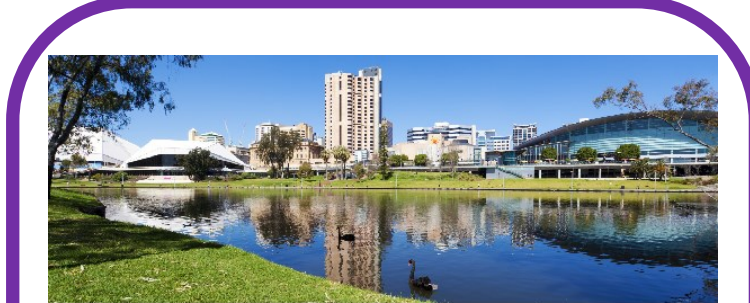
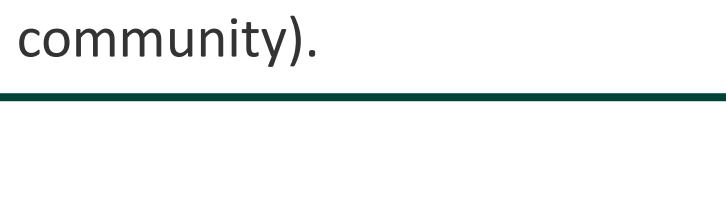
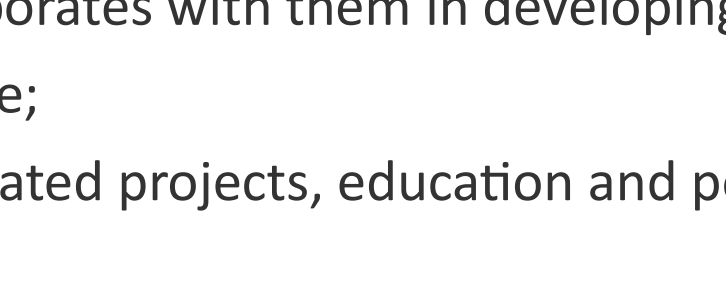
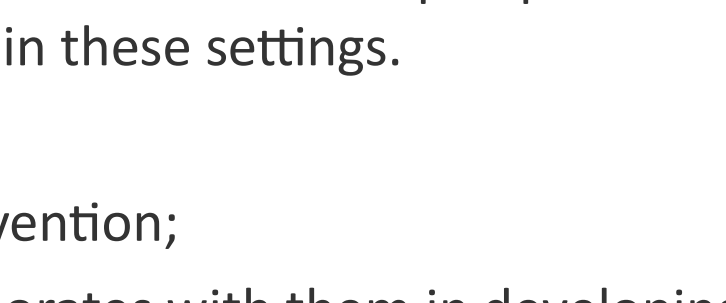
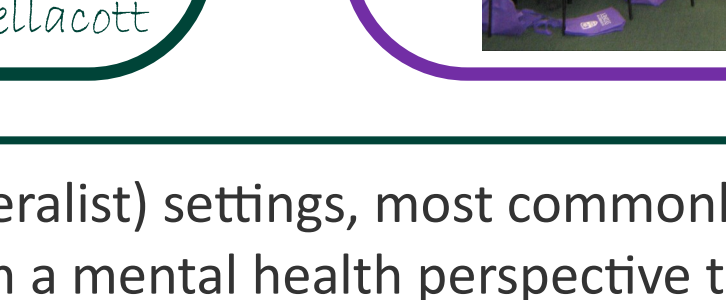
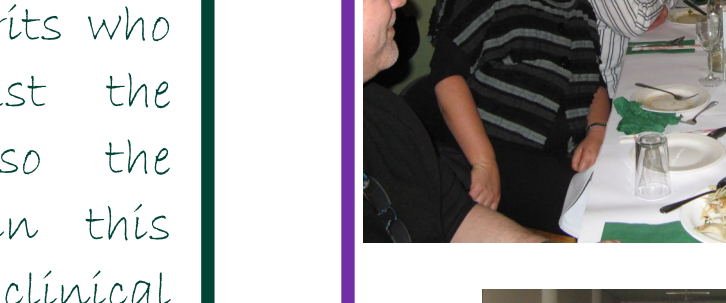
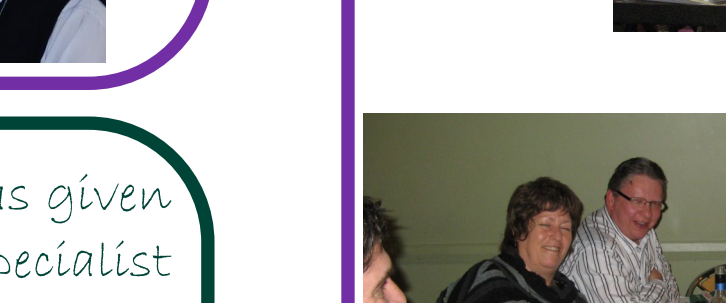
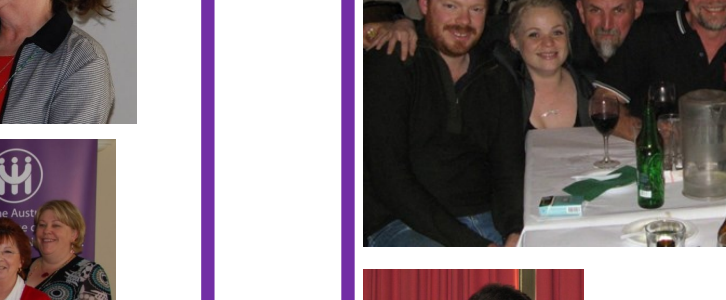
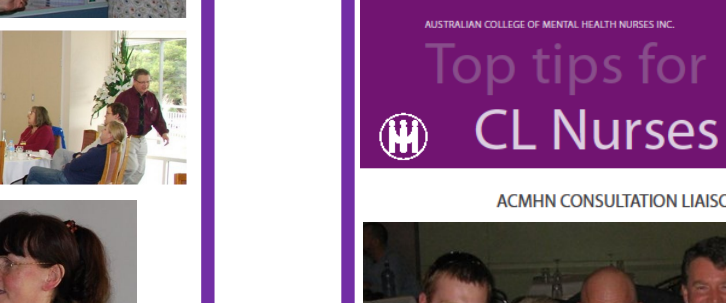
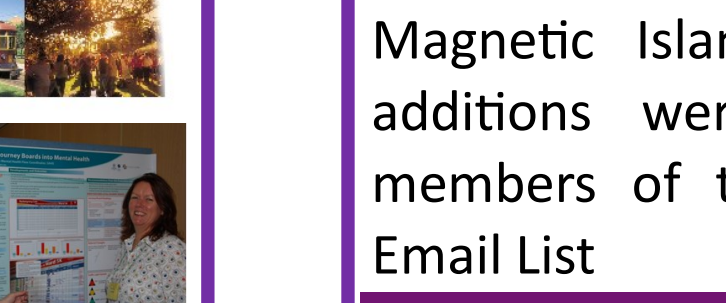
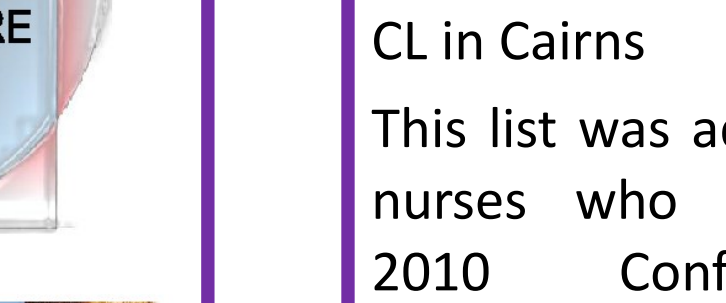
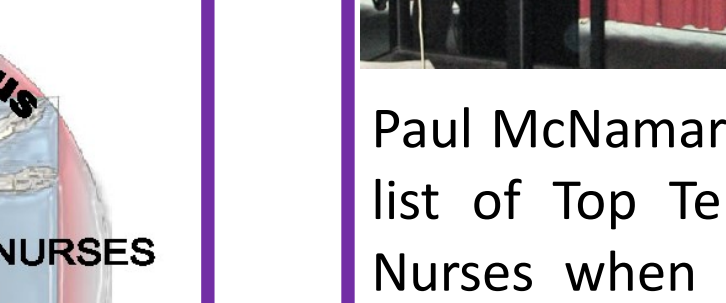
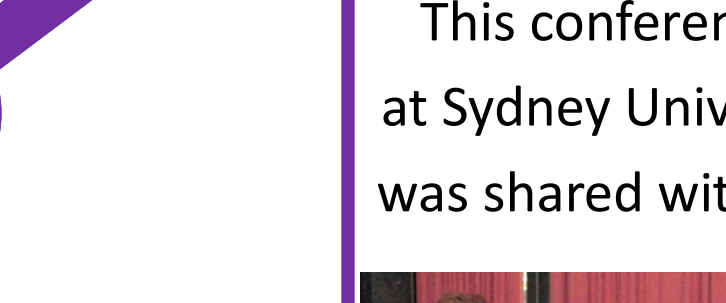


Mental Health Nurses maximising potential

Our 10th birthday was held in Melbourne in conjunction with the Perinatal & Infant Mental Health SIG

Susan Krupnick Director of the ISPCN joined us for our celebrations

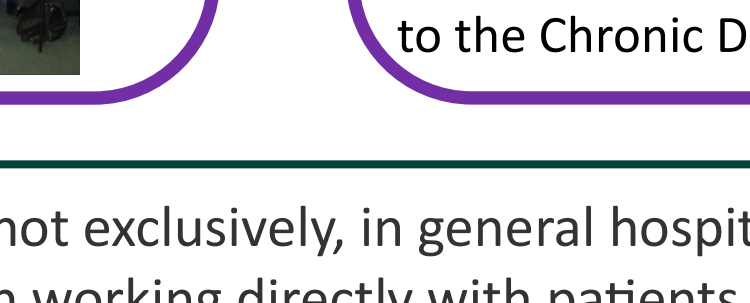
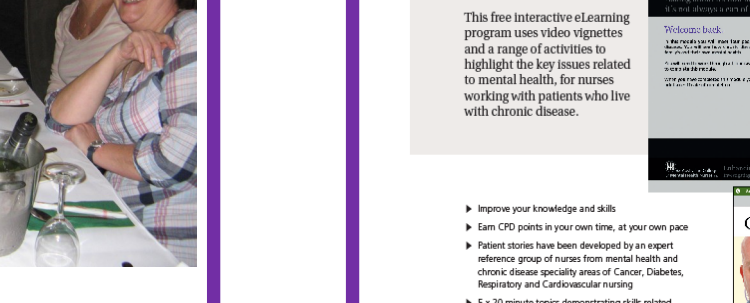
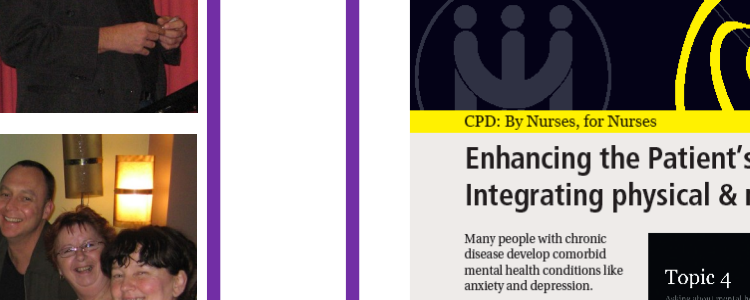
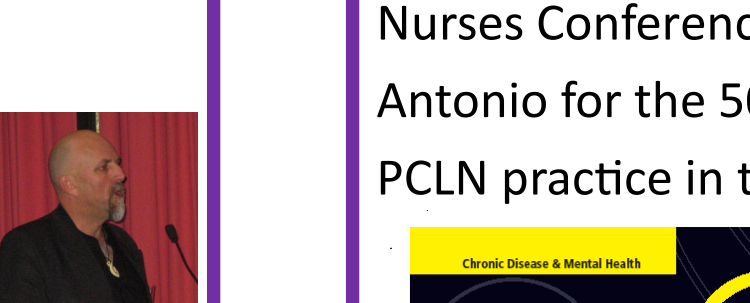
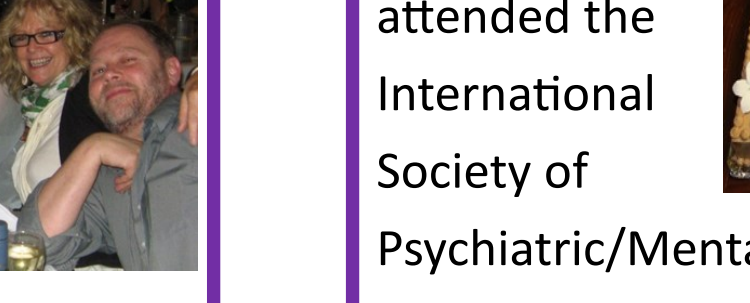
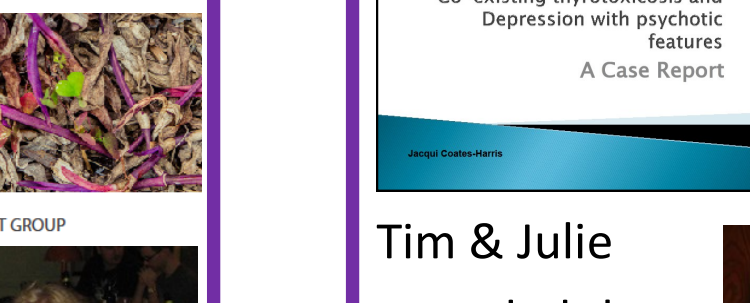
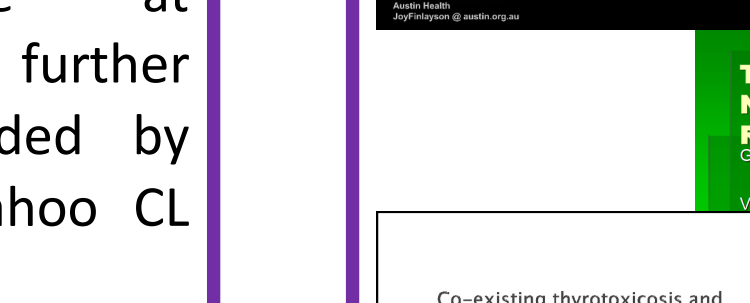
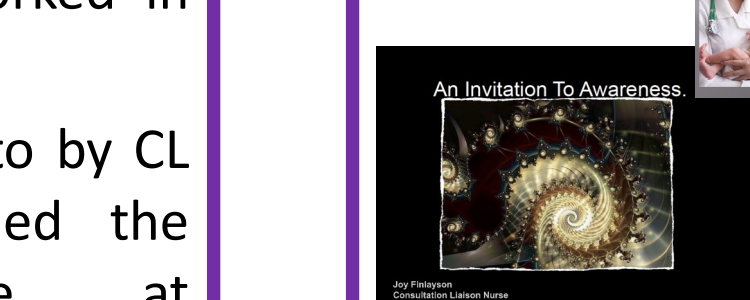
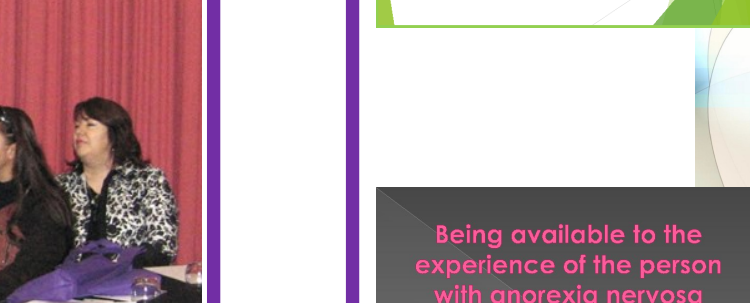
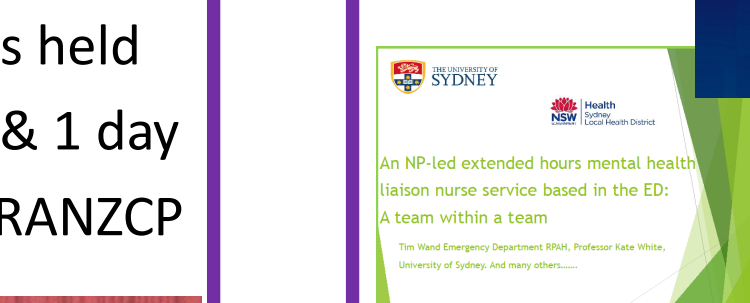
Workshops & an award for best paper were introduced



Our 10th birthday was held in Melbourne in conjunction with the Perinatal & Infant Mental Health SIG

Susan Krupnick Director of the ISPCN joined us for our celebrations

Workshops & an award for best paper were introduced



Brisbane 2015
Passion & compassion in CL & PIMH nursing

Challenges, changes & camaraderie

was the theme that brought us to Melbourne

Paul McNamara did his 1st hypothetical

And the results of our survey were presented

A final comment from the results of the 2005 Australian CL Nurses survey...

The characteristics and outcomes of mental health patients presenting to an emergency department over a twelve month period

We joined the North Queensland tropical symposium for the 1st of 3 successful collaborations

John Forster told us that "CL Nursing was like herding cats but he wouldn't do nothin' else"

In Adelaide we joined the SA Branch & it was here that College president, Steve Elsom was approached to form a special interest group

An interim executive was elected

Into the light from darkness Capturing the moment

"I first joined the group in 2008 & my 1st conference was in Port Douglas. The CLSIG is a very friendly, supportive, passionate, diverse & knowledgeable group of clinicians who made me feel very welcomed & connected."

Blair Hobbs

Another successful collaboration with the North Queenslanders was held in Port Douglas

Issues, Innovations & Intelligence in CL nursing

This conference was held at Sydney University & 1 day was shared with the RANZCP

Paul McNamara developed a list of Top Ten Tips for CL Nurses when he worked in CL in Cairns

This list was added to by CL nurses who attended the 2010 Conference at Magnetic Island & further additions were added by members of the Yahoo CL Email List

Legal, ethical & clinical challenges in CL nursing

in Sydney was held under the ACMHN CLSIG banner & we launched our first major piece of work

YOU ARE NOT ALONE RESULTS OF THE 2005 AUSTRALIAN CONSULTATION-LIAISON NURSES SURVEY

Joining the CLSIG has given me access to a specialist group of kindred spirits who understand not just the difficulties but also the rewards of being in this somewhat isolated clinical role. I particularly enjoy the variety of discussion topics, journal articles & support offered via the CLSIG e-list."

Catherine Vellacott

A CL mental health nurse focuses on the mental health care of people in non-psychiatric (generalist) settings, most commonly but not exclusively, in general hospital wards, emergency departments, and nursing homes. The CL nurse aims to improve outcomes in patient care from a mental health perspective through working directly with patients and indirectly through increasing the capacity of staff to recognise and attend to the mental health needs of patients in these settings.

The CL nurse:

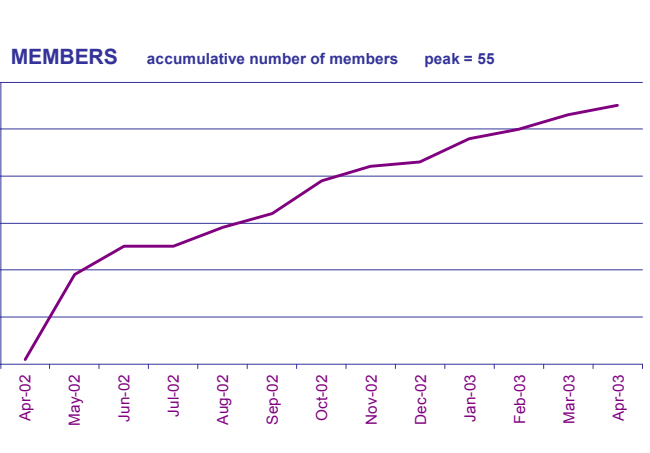
- works with patients and their relatives providing expert mental health assessment and intervention;
- provides guidance, education and support to generalist staff caring for the patient and collaborates with them in developing a plan of care;
- acts as a positive role model to generalist staff in psychiatric - mental health care and practice;
- works with the organisation or department as a mental health resource on mental health related projects, education and policy development; and
- acts as a link between generalist and mental health services (public and private, hospital and community).

Isolated geographically Connected electronically

Paul McNamara set up an e-list so CL nurses could communicate with each other & share information

Jenni Bryant posted the 1st message: "Is anybody out there?"

From then on there was active participation, generous & supportive sharing of ideas, & lively debates on practice issues

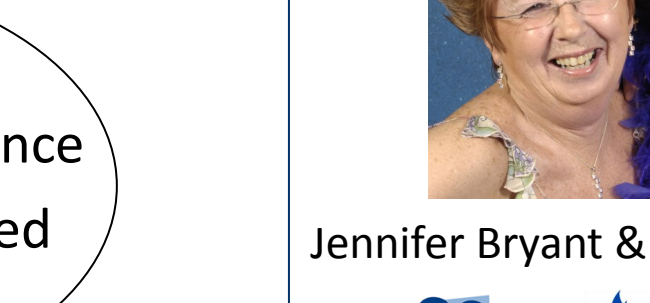


At the Southport College conference Jenni, Julie & Cecily Pollard talked about a specialist group for CL nurses

A group of CL nurses had lunch at the Melbourne College conference

Jenni & Julie met at the College conference in Launceston & talked CL nursing

Jennifer Bryant & Julie Sharrock



In Noosa we were Present and Available

Aggression risk screening at ED: implications and potential outcomes of identifying risk of aggression in triage